

# TREES and DRAINS



0mm  
Max root depth

600mm  
Distance reached  
Height of tree **x3**



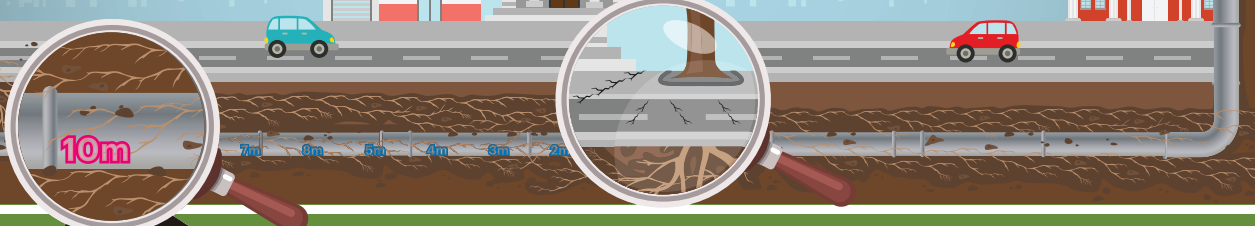
Takes **20 years** for new pipes to have root problems



Roots can exert pressure **3x** greater than some rubber pipe seals can withstand

**10m**  
Distance inside pipe roots found to grow

**2m**  
Max distance from tree where damage is done to built structure



## How tree roots get into pipes

Roots attracted by leaking water

**Through loose joints**  
(made worse by soil movement)

**Through weak seals**

**Through cracks**

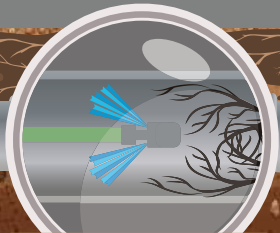
## How they cause blockages

**Snagging fats and other objects**  
- including wipes

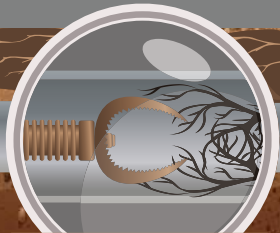
**Slowing flow causing blockages downstream**

**Completely filling pipe**

## How to get tree roots out of pipes



**Water Jetting**



**Mechanical Cutters**

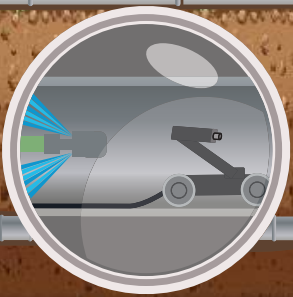


**Robotic Cutters**



**Excavation**

## How to protect pipes from trees



Regular CCTV surveys + jetting



Line pipe to make it stronger



After



Contain roots inside tree boxes

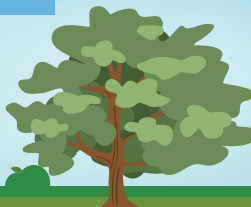
## Trees not to plant near pipes



**Poplar**



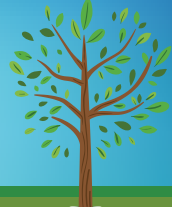
**Maple**



**Sycamore**



**Oak**



**Fig**



**Need expert help? Contact us today**

**0333 344 2937 | solutions@ukdnwaterflow.co.uk**

Part of the Lanes Group plc